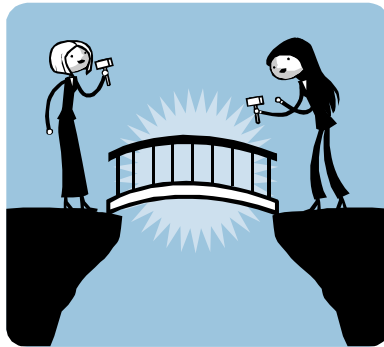


The  
Transition and Communication  
Consortium on Learning & Disabilities (TACCLD)

Presents:

# The 21<sup>st</sup> Annual TACCLD Conference



# Extending the Bridge

**Wednesday, February 27, 2008**

At

The Ohio State University  
Blackwell Executive Hotel and Conference Center  
2110 Tuttle Park Place  
Columbus, Ohio 43210

## What is TACCLD?

The Transition and Communication Consortium on Learning & Disabilities, (TACCLD), is a network of individuals exploring ways to facilitate the transition of high school students with learning disabilities and other hidden disabilities such as AH/HD, psychiatric disabilities and autism spectrum disorders to the postsecondary educational and vocational experience.

## Who should attend?

- Postsecondary support services staff
- Special education teachers
- Regular education teachers
- Guidance counselors
- High school, college and vocational staff
- Parents
- Private consultants
- School psychologists

## Membership Benefits

- Opportunity to nominate students for TACCLD scholarships
- Annual newsletter
- An opportunity to network with peers statewide
- Advance notification of next conference

## Conference Schedule

Wednesday, February 27, 2008

8:00 – 8:45 am	Registration & Continental Breakfast
8:00 – 2:30 pm	Silent Auction
8:45 – 9:00 am	Welcome
9:00 – 10:00 am	Keynote Speaker
10:15 – 11:15 am	Concurrent Session I
11:30 – 12:30 pm	Concurrent Session II
12:30 – 12:45 pm	Break
12:45 – 1:45 pm	Scholarship Luncheon
1:45 – 2:00 pm	Break & Silent Auction Final Bids
2:00 – 3:00 pm	Concurrent Session III
3:00 pm	Silent Auction Pick Up
3:00pm	Book Signing and Reception with Ann Palmer

## Questions?

For questions about the conference, please contact Michelle Butler at Muskingum College at (740)-826-8280

## Conference Highlights

### **Keynote Speaker: Ann Palmer**

Ann Palmer is the Director of Chapter Relations for the Autism Society of North Carolina. She coordinates close to 40 Chapters and support groups across the state. Ann has published two books: “Realizing the College Dream with Autism or Asperger Syndrome: A Parent’s Guide to Student Success”, and “Parenting Across the Autism Spectrum: Unexpected Lessons We’ve Learned” which she co-authored with Maureen Morrell. Both books are published by Jessica Kingsley Publishers. She has also been published in the Journal of Autism and Developmental Disorders, the MAAP, the newsletter of the MAAP Services for Autism and Asperger Spectrum, Exceptional Parent Magazine, and Tweens and Teens News Magazine.

Ann presents internationally and has presented at numerous conferences including the Autism Society of America National Conference, the Leo M. Croghan Conference on Developmental Disabilities, the Association for Higher Education and Disabilities (AHEAD) Conference, the MAAP Services for Autism and Asperger Syndrome Annual Conference, the National Smart Start Conference, and the Autism Society of North Carolina Annual Conference.

### Concurrent Sessions Include:

- Summer programs for students with disabilities
- Ask the ADA Coordinator
- Widening the lens of Universal Design
- What College Disability Services can do for students with disabilities

### Scholarships

TACCLD will be awarding seven \$1,000 academic scholarships for high school students with learning disabilities. One of the scholarships will be the Hal Hazelett Award. This award will be given in memory of the late Hal Hazelett, who was a dedicated college math teacher known for his great love of teaching young people. He was a generous supporter of TACCLD, and his wife, Marge Hazelett, continues to serve on the TACCLD conference planning committee. This year TACCLD will also award a 7th scholarship to students with AD/HD thanks to the generous contribution from The Brownell Family Charitable Trust.

## Conference and Accommodations

### Location

The Blackwell Executive Hotel and Conference Center  
At The Ohio State University  
2110 Tuttle Park Place | Columbus, Ohio 43210  
Phone: 614-247-4000 | Toll Free: 866-247-4003  
<http://www.theblackwell.com/>

### Directions

**From the East:** Travel I-70 West, to the State Route 315 interchange. Follow State Route 315, North, to the Lane Avenue exit. Go east (right), past Olentangy River Road, until you come to Tuttle Park Place. Turn right at the traffic light and follow Tuttle Place past Neil Ave. The Blackwell will be on your left.

**From the West:** Travel I-70 East, to the State Route 315 interchange. Take State Route 315, North, to the Lane Avenue exit. Go east (right), past Olentangy River Road, until you come to Tuttle Park Place. Turn right at the traffic light and follow Tuttle Park Place past Neil Avenue. The Blackwell will be on your left.

**From The North:** Travel I-71 South, to the Interstate 270 interchange. Travel I-270, West, to the State Route 315 interchange (1.3 mi.). Follow State Route 315, South, to the Lane Avenue exit. Go east (left), past Olentangy River Road, until you come to Tuttle Park Place. Turn right at the traffic light and follow Tuttle Park Place past Neil Avenue. The Blackwell will be on your left.

**From the South:** Travel I-71 North, to the State Route 315 interchange. Follow State Route 315, North, to the Lane Avenue exit. Go east (right), past Olentangy River Road, until you come to Tuttle Park Place. Turn right at the traffic light and follow Tuttle Park Place past Neil Avenue. The Blackwell will be on your left.

### Hotel Rate

Rooms at the Blackwell are **\$129 per night** for single or double occupancy and must be reserved by **January 26, 2008**. Registrants must make their own reservations and let the hotel staff know that you will be attending the TACCLD Conference to receive this rate.

### Parking

Valet parking is \$5 for 5 hours or less, \$9 for a full day, and \$15 for overnight. Those who do not wish to use valet parking can park nearby in the Tuttle pay parking garage adjacent to Ohio Stadium.

### Professional Certificates of Attendance

are available for teachers and service providers.  
\$5.00 fee to be paid separately at the conference  
(**check** made payable to *FCESC* or **money order only**)

## Registration/Membership Form

This form is available online in MS WORD on the TACCLD web site at <http://tacclld.org/forms.html>

Name \_\_\_\_\_

Title \_\_\_\_\_

School \_\_\_\_\_

Bus. Address \_\_\_\_\_

City \_\_\_\_\_

State \_\_\_\_\_ Zip \_\_\_\_\_

Phone (\_\_\_\_) \_\_\_\_\_

E-Mail \_\_\_\_\_

*Please indicate if any of the following apply:*

I am interested in being a concurrent session moderator for the conference.

Special needs associated with my disability include \_\_\_\_\_

I need a vegetarian lunch.

I will be staying overnight at the Blackwell.

(Please note that this information is for planning committee purposes only; it will not serve as a reservation with the hotel.)

### **Conference Fees:**

Prior to January 26, 2008	\$90
After January 26, 2008	\$100
Students	\$50
Membership only, not attending	\$10
<b>Total Amount Enclosed</b>	<b>\$</b>

Make check or money order payable to: **TACCLD**  
(Purchase orders or credit cards are not accepted.)

**No refunds after February 15, 2008**

Please detach & mail this form with payment to:

TACCLD Registration  
c/o Michelle Butler  
Center for Advancement of Learning  
Muskingum College  
New Concord, OH 43762

## TACCLD PLANNING COMMITTEE MEMBERS 2007-2008

*Lisa Besnoy, Disability Services, Northern Kentucky University*  
*Kay Bishop, Marysville High School*  
*Lydia Block, Ohio Wesleyan University / Block Educational Consulting*  
*Terry Brownell, Parent Advocate*  
*Lois Burke, Office for Disability Services, The Ohio State University*  
*Michelle Butler, Center for Advancement of Learning, Muskingum College*  
*Patty Carlton, Office for Disability Services, The Ohio State University (Retired)*  
*Elizabeth Cobey-Piper, Advocate*  
*Wayne Cocchi, Department of Disability Services, Columbus State Community College*  
*Tammy Cooper, Marysville High School*  
*Enjie Hall, Office for Disability Services, The Ohio State University*  
*Lorraine Hartke, Kings High School*  
*Marge Hazelett, Disability Services, The Ohio State University - Marion Campus*  
*Chris Keck, Office for Disability Services, The Ohio State University*  
*Mike Kinney, Ohio Rehabilitation Services Commission*  
*Michelle McLane, Disability Services, The Ohio State University – Mansfield Campus*  
*Charla McAbier, EHOVE Career Center*  
*Caitlyn McCandless, Office for Disability Services, The Ohio State University*  
*Leah Monaghan, Office for Disability Services, Otterbein College*  
*Karen Meyer, Disability Services, The Ohio State University - Lima Campus*  
*Kristin Rinehart, Plus Program – Muskingum College*  
*Elaine Steinfurth, Parent Advocate*  
*Connie Zang, Disability Services, The Ohio State University – Newark/Central Ohio Technical College*



P.O. Box 20429  
Columbus, OH 43220-0429